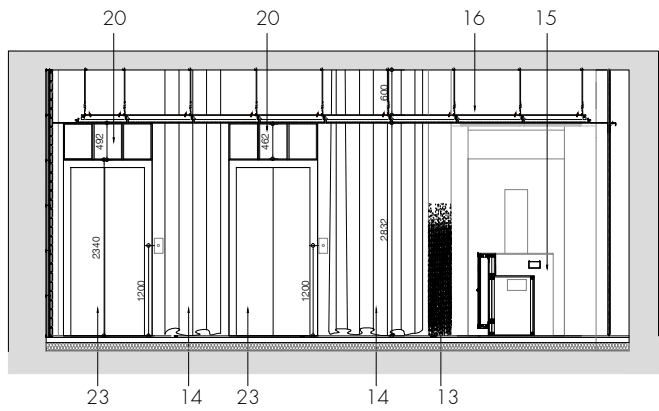
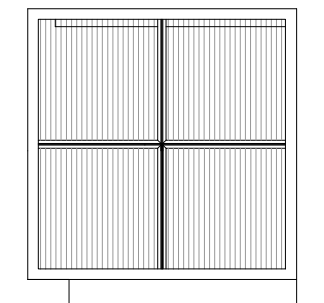
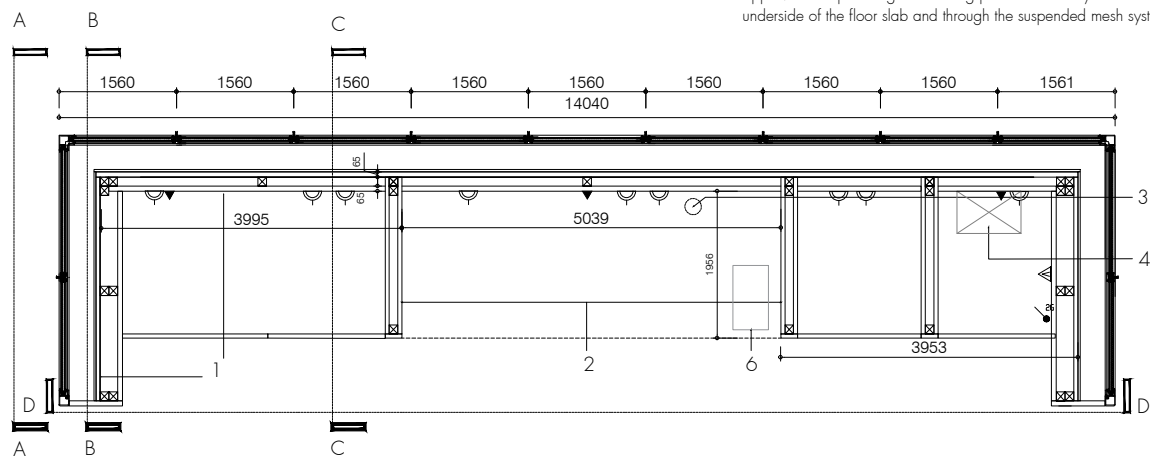


KEY

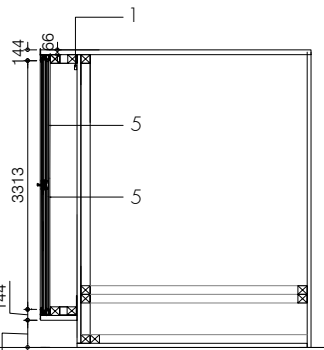
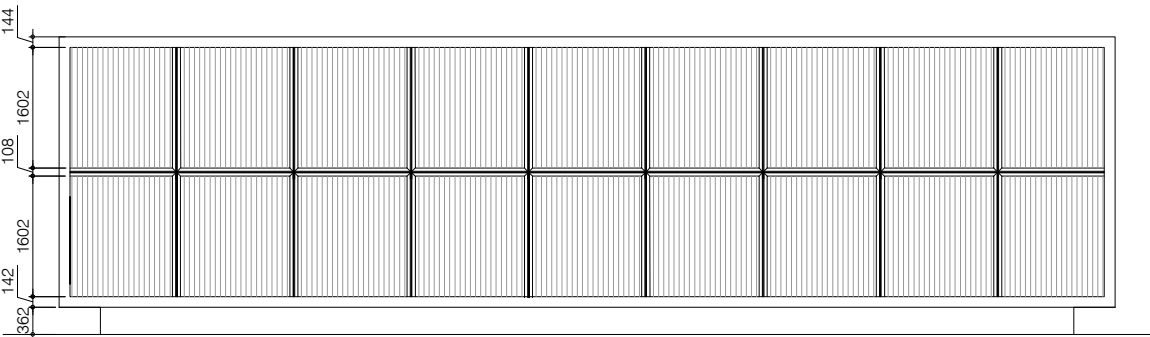
1. LED Strip light within a Channel with Opal Diffuser - continuous sections of vertical tube by Synergy. 17.5mm wide and 8mm deep. Wall mounted fixings provided by Synergy. Light will be diffused so as not to create shadow.
2. 18mm black U999 ST12 Egger MFC - price £84.27 per sheet + VAT (cutting included in price and max usable size panels come in 2760 x 2030mm).
3. 1x incoming electrical riser location for electrical point to reception desk. Size and location to be confirmed by client.
4. 1x incoming electrical riser location for reception desk. Size to be confirmed by MEP.
5. 4mm Fluted glass supplied by middlesex glass with second opaque layer of glazing. Panels cut to required size by supplier.
6. Video entry phone for staff and rear door located in reception desk area in black stainless steel. Size and type TBC.
7. All switches and sockets to be finished in black Onyx (Hairline) by Rimex T22 Stainless Steel coating.
8. Grooves to be sanded and cut by contractor on site. 5mm radius for the groove.
9. Shelves allocated for post and parcels.
10. Fire Doors on Floor Spring by GEZE - to be bespoke finished in RAL9002 to match clayworks plaster finish. Door to lie flush with corridor walls. No visible door closer mechanism. Bespoke door Supplied by GEZE or similar approved. Door to be automatically operated to close shut in the event of an emergency. See drawing 558-18-6000 for further details.
11. Wall finish: Clay Plasterboard by Clayworks, with Clayworks painted primer coat, Smooth pigmented Top Coat 2-3mm without mica. www.clay-works.com. Clay works wall build up 1: 2 x layers of Soundbloc plasterboard fixed to stud wall. 70 S 50 °C studs fixed together with British Gypsum Wafer Head Drywall Screws at 600mm centers. Clay works wall build up 2: 1 x layer of plasterboard fixed to concrete structural wall on 10mm Clay works wall build up 3: 1 x layer of plasterboard fixed directly to face of blockwork on 10mm dabs. Skimmed plaster finish for all walls.
12. Spray painted bicycle motif by specialist sub contractor.
13. GRC 'Mock Columns' by telling Architectural with half painted finish. Details to be confirmed GRC grey self supporting 15mm thick panels, 007 Mid Blast, factory sprayed in black to face of column. Half painted finish effect achieved with Keim silicate. Columns fixed to the soffit of concrete floor slab and FFL of floor slab below.
14. Curtain drapes - Refined Grey Hessian fabric from www.discoverdirect.co.uk or similar approved. Drapes hung from ceiling pole and hook system fixed directly to the underside of the floor slab and through the suspended mesh system. To be confirmed by specialist sub contractor. Refer to drawing 558-18-5002 for details.
15. Metal framed reception desk with fluted glass panels - back lit with diffused tubular lighting and internal frame built out of timber and 1 x layer of 18mm Egger board in black U999 ST12. Outer feature metal frame is to be coated in Rimex Black Onyx. Drawer, power sockets and intercom fitted to desk with services running in suspended along rear corridor. see drawing 558-18-5000 for details. 1x incoming electrical riser point to desk.
16. Suspended ceiling panels in Black - UMD - St213- Hook On panels suspended directly from concrete floor slab, with edging detail by Lindner see drawing 558-18-5001 for details. Ceiling void to be confirmed by MEP following Tender.
17. Brick wall by Petersen Teg- Kolumba range, K92 Bric 528mm x 108mm 37mm. Bricks tied back to blockwork leaf with Ancon Wall Starter System to suit brick coursing.
18. Entrance Matting systems- colour treat range, standard 17mm depth profile, Insert Type CT001, Insert colour black, scraper colour black. In the front entrance the matting does not need to exceed the width of the entrance door and should be between 2 and 2.5 meters from the foot of the entrance door. Matting to align with tiles/feature strips. Matting laid in recessed matwell area with aluminium angle frame, or, surface-laid with ramp frame.
19. Floor and corresponding company name projected on to the wall directly Ceiling mounted bracket and basic projector system from Savilles-01904782782, or black vinyl lettering. Client to confirm.
20. Metal Framed 'mock window' with fluted backlit glass panel in same style and materials as reception desk and treated in T22 Rimex Black Onyx coating by specialist sub contractor. See drawing 558-18-5002 for details.
21. New ramp to be built out at 1:2 gradient at rear corridor. Step and ramp to be made with screed and blockwork. 2237mm in width x 1619mm.
22. Stencil part sprayed on to powderturn fire door. Warranty for door to be checked with manufacturer in advance regarding additional manifestations.
23. Lift exterior door, entrance and frame of entrance to be finished in black Onyx (Hairline) by Rimex T22 Stainless Steel coating. Contractor to liaise with lift manufacturer and Rimex to determine whether factory finished or applied on site prior to installation. Access control required.
24. All switches and sockets to be finished in black Onyx (Hairline) by Rimex T22 Stainless Steel coating.
25. Recessed wall mounted radiator in RAL colour 9002 to match walls.
26. Bespoke metal border plate by Lindner in black colour RAL9005 to match mesh ceiling. Dimension varies, please refer to 558-18\_8000 RCP drawings for dimensions.
27. 1280mm W x 460mm D x 270mm H, over door heater with black grill , flush to underside of ceiling mesh.



Plan of reception desk

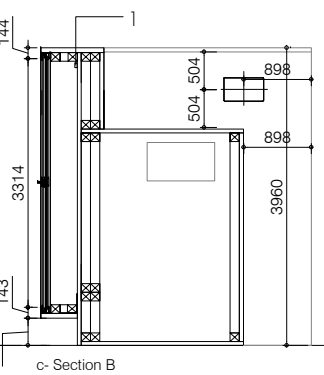
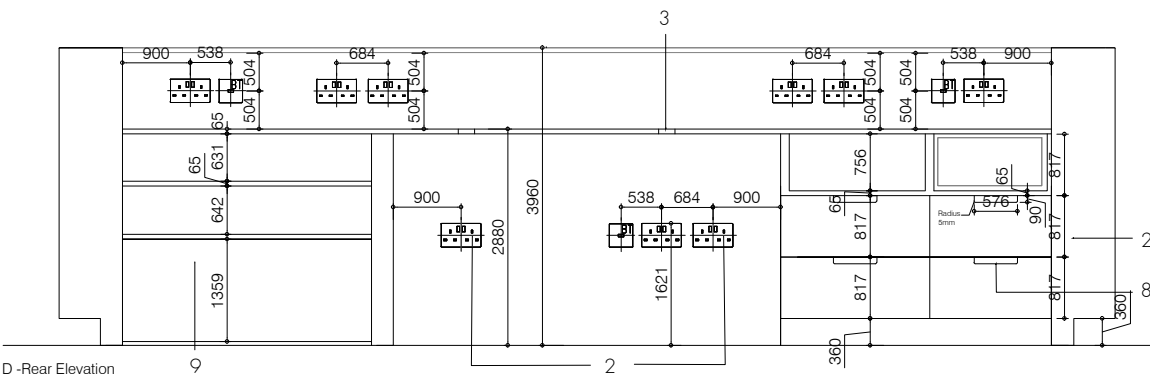


A- Elevation



B- Section C

Front Elevation



c- Section B

D-Rear Elevation